



UNDERSTAND  
DECIDE  
OPTIMIZE



TRACK ADVANCE  
PERFORMANCE ASSISTANCE TECHNOLOGY

# ULTRA-CUSTOMIZABLE, EXTENSIBLE AND INTEROPERABLE

## CONNECTIVITY TO TRACK ADVANCE

Connect your PLC, Scada, ERP, CMMS...  
and any other type of third-party applications

Track Advance supports a wide range of

- Fieldbus: ethernetIp, modbus, ...
- Database engines connectors (SQL Server, MySQL, Oracle...)
- Communication protocols (HTTP, HTTPS, WebSocket, MQTT...)

## CONNECTIVITY FROM TRACK ADVANCE

Accepts data from any other type  
of third-party applications

- Rest API ( OpenAPI 3 )
- Websockets
- MQTT

## VISUALIZATION

User-friendly and beautiful dashboards, reports  
and graphs... built to meet the industry standards

## ANALYSIS

Extract the essence of your data thanks to an advanced  
data processing algorithm

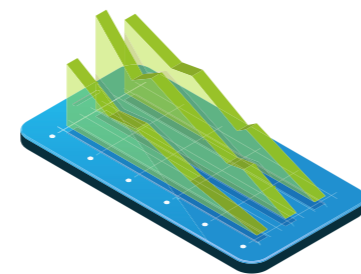
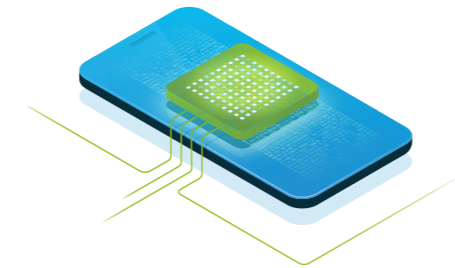
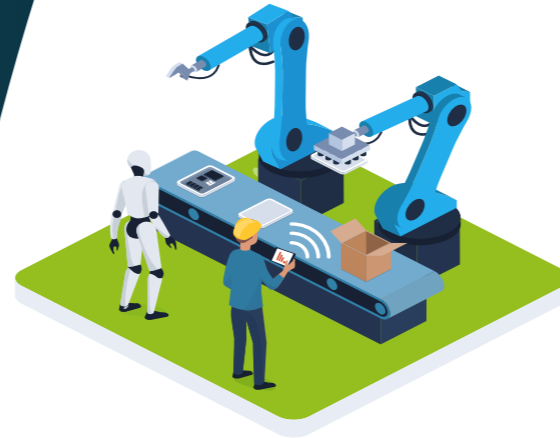
## HISTORIZATION

Backup and access your data up to 5 years

## DEPLOYEMENT

Fits your operational constraints:

- From a simple ultra compact PC to fully managed highly  
available clusters
- At Edge (on premise) or in the Cloud (public or private)



# DISCOVER SMART MONITORING

Track Advance has a number of features which allow you to improve  
and have better control of the overall performance of your factory.  
Give all your stakeholders the ability to impact  
production performance.

## 1. THE ESSENTIAL PARAMETERS OF YOUR PERFORMANCE, AT A GLANCE

Dashboards  
Real-time data\*  
Customizable widgets

## 2. DATA-EXPLORER: A SIMPLE WAY TO ACCESS ALL THE DATA

Visualization of the collected data  
Real-time data\*  
Save predefined profiles  
Share and reuse in dashboards

## 3. CLEANING, PRODUCTION AND ENERGY CONSUMPTION ANALYSIS EXPERTISE

Cleaning and production reports & benchmarks

- Compliance to operating modes and standard  
procedures
- Monitoring « anomalies » (alarms, operator  
actions...)

Performance evaluation against real or theoretical  
references (golden batch)

- Energy consumption
- Execution duration
- Alarms & events
- Process parameters  
(temperatures, flowrate, pressure...)
- Product loss

## 4. TRACEABILITY AND GENEALOGY: END-TO-END BATCH PRODUCTION REPORT IN FEW CLICKS

Complete ascending and descending traceability  
Multiple criteria search capabilities  
(batch number, raw material lot number...)

## 5. COMPLETE BATCH AND FORMULATION RECIPE ENGINE

No need to reinvent the wheel: leverage the power  
of a proven system

- Drag and drop recipe composition
- Formula editor



\*an offset of a few minutes can sometimes be observed



An innovative application, **Track Advance** allows you to compile data, to monitor the entire production cycle, and to analyze the information to sustainably optimize industrial performance.

Efficient, interconnected, accessible, secure: with **Track Advance**, you can finally take full control of your industrial performance.



**A LIVE DEMO ?  
CONTACT US ON OUR WEBSITE**

---

**WWW.TRACK-ADVANCE.COM**

---

